

# The Watkins 27 thinks she's a 30' sloop. What an incredible ego!

It's what you might expect from a big, roomy cruising boat rigged out to make her a really great performer, and priced at only \$20,975!\*

## Above and below decks, the Watkins 27 has more standard equipment going for you than you'd expect:

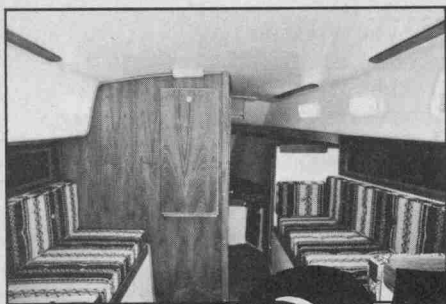
A skeg mounted rudder and prop shaft with a 3-bladed prop (instead of 2) that really digs in from power supplied by an 8 h.p. Renault diesel. A fuel capacity large enough to take you approximately 400 miles non-stop. A fully pressured 40-gallon water system. A 12-volt battery with 8 switches and 3 spares; and a 12-volt bilge pump that moves 1,500 gallons per hour. Compare that with other 27' boats!

## Full standing room below—even if you're 6'2" tall!

You'll be amazed at the spacious, brightly lit living quarters, all functionally designed to cruise a family of 5 for days of blissful comfort. The easily accessible forward hatch leads to an L-shaped galley with a handy bulkhead mounted dropleaf folding table. There are sliding cabinets and plush cushions and a stand-up head with room to shower.

Sailability? The Watkins 27 is a sure handler with a broad 10' beam and 23'8" L.W.L. At a hefty 7,500 lbs., she offers an incredible ballast ratio of 46%! But her real ego stems from the construction quality that's built in: A fully insulated hull liner—a deep, workable bilge—open turn buckles—shore power—bow pulpit—lifelines—stanchions—snatch block toe rail—mooring cleats—handrails fore and aft—cockpit ice chest—sail locker—hanging locker—topping lift—genoa winches... and a full 347 square feet of sail with reef points and 110° lapper.

And if you're still wondering why a boat this size has an incredible ego, just take another look at her price tag. Then run down to your nearest Watkins dealer and take her out on an ego trip of your own.



# WATKINS

The Ultimate  
Ego Trip

# 27

## WATKINS



Watkins Yachts, Inc., 12645 49th Street N., Clearwater, FL 33520, (813) 577-3684

©1979 Watkins Yachts, Inc.

Write for the name of your nearest Watkin's dealer.

\*F.O.B. Clearwater, FL.  
Dealer freight and  
commissioning additional.  
Prices subject to change  
without notice.